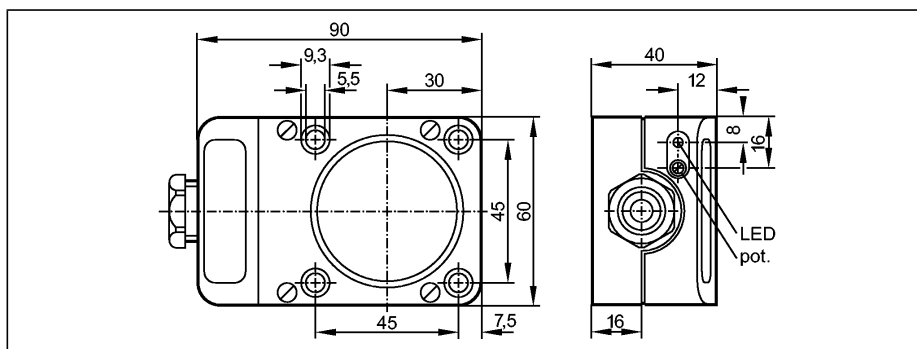


Inductive sensors

IC5005

ICE3040-FPKG
Inductive sensor
Rectangular, plastics
Terminals

Sensing range 40 mm [nf]
adjustable
non-flush mountable



Made in Germany

Electrical design

Output

Operating voltage	[V]
Current rating	[mA]
Short-circuit protection	
Reverse polarity protection	
Overload protection	
Voltage drop	[V]
Current consumption	[mA]
Real sensing range (Sr)	[mm]
Operating distance	[mm]
Switch-point drift	[% of Sr]
Hysteresis	[% of Sr]
Switching frequency	[Hz]
Correction factors	
Ambient temperature	[°C]
Protection	
EMC	
MTTF	[Years]
Housing materials	
Function display	
Switching status	LED
Connection	
Weight	[kg]
Accessories (included)	

DC PNP

normally open / closed programmable

Operating voltage	10...36 DC
Current rating	250
Short-circuit protection	pulsed
Reverse polarity protection	yes
Overload protection	yes
Voltage drop	< 2.5
Current consumption	< 15 (24 V)
Real sensing range (Sr)	40 ± 10 %
Operating distance	0...32.4
Switch-point drift	-10...10
Hysteresis	1...15
Switching frequency	15
Correction factors	mild steel = 1 / stainless steel approx. 0.7 / brass approx. 0.4 / Al approx. 0.3 / Cu approx. 0.2
Ambient temperature	-25...80
Protection	IP 65, II
EMC	EN 60947-5-2
MTTF	1261
Housing materials	PPE
Function display	yellow
Connection	terminals up to 2.5 mm ² ; cable diameter 7...13 mm, cable gland M20 x 1.5
Weight	0.267
Accessories (included)	screwdriver

Wiring

