

## KRPA-11AN-120 Product Details




**KRPA-11AN-120**

TE Internal Number: 3-1393104-2

 **Active**

### Industrial Relays (General Purpose)

 **Converted to EU RoHS but not ELV Compliant**  
(Statement of Compliance)

#### Product Highlights:

- KRPA Series
- Contact - Current Class = 5A to 10A Class, Less Than 16A
- Contact - Rated Current = 10 A
- Terminal Type = Plug-in
- Contact - Arrangement = 2 Form C (CO)

### Documentation & Additional Information

#### Product Drawings:

- None Available

#### Catalog Pages/Data Sheets:

- [KRPA, KRP, KA, KR 5 to 10 Amp General Purpose Relay](#) (PDF, English)

#### Product Specifications:

- None Available

#### Application Specifications:

- None Available

#### Instruction Sheets:

- None Available

#### CAD Files: (CAD Format & Compression Information)

- [2D Drawing](#) (DXF, Version D)
- [3D Model](#) (IGES, Version D)
- [3D Model](#) (STEP, Version D)

#### Additional Information:

- [Product Line Information](#)

#### Additional Product Images:

- [Schematic](#)
- [Wiring Diagram](#)

#### Related Products:

- [Tooling](#)

### Product Features (Please use the Product Drawing for all design activity)

#### Product Type Features:

- [Series](#) = KRPA
- Terminal Type = Plug-in

#### Electrical Characteristics:

- Contact - Current Class = 5A to 10A Class, Less Than 16A
- [Contact - Rated Current \(A\)](#) = 10
- Contact - Limiting Continuous Current (A) = 10
- Contact - Limiting Making Current (A) = 10
- Contact - Limiting Breaking Current (A) = 10
- Insulation - Initial Dielectric Between Coil/Contact Class = 500V to 1000V Class
- Insulation - Initial Dielectric Between Open Contacts (V rms) = 1000
- Insulation - Initial Dielectric Between Contacts and Coil (V rms) = 1000
- Contact - Rated Voltage (VAC) = 240
- Contact - Limiting Short-Time Current (A) = 10
- Contact - Switching Recommended Load, Min. = 300mA at 12V
- Coil - Rated Voltage (VAC) = 120
- [Coil - Resistance \(Ω\)](#) = 2250
- [Coil - Rated Power, AC \(VA\)](#) = 2.00
- Coil - Rated Power Class = 2.0VA to 3.0VA Class
- Insulation - Initial Dielectric Between Adjacent Contacts (V rms) = 1000
- Insulation - Initial Insulation Resistance (MΩ) = 1000000

#### Dimensions:

- Mechanical - Length Class = 35mm to 40mm Class
- Length (mm [in]) = 35.70 [1.406]
- Mechanical - Width Class = 30mm to 40mm Class
- Width (mm [in]) = 35.70 [1.405]
- Mechanical - Height Class = >50mm Class
- Height (mm [in]) = 50.80 [2.000]

#### Body Features:

- Mount Type = Socket
- Weight (g [oz]) = 85.00 [2.988]

#### Contact Features:

- Contact Material = AgCdO
- Contact - Number of Poles = 2

#### Configuration Features:

- [Contact - Arrangement](#) = 2 Form C (CO)
- [Coil - Magnetic System](#) = Monostable, AC
- Coil - Special Features = Electrical Indicator, UL Coil Insulation Class B

#### Industry Standards:

- [RoHS/ELV Compliance](#) = RoHS/Not ELV Compliant
- [Lead Free Solder Processes](#) = Not relevant for lead free process
- RoHS/ELV Compliance History = Converted to comply with RoHS not ELV directives
- Approved/Registered Standards = CSA, UL

#### Environmental:

- Environmental - Category of Protection = RTI
- Environmental - Ambient Temperature, Max. (°C [°F]) = 55 [131]
- Environmental - Ambient Temperature Class = 50°C to 70°C Class

#### Packaging Features:

- Packaging Method = Tray

#### Other:

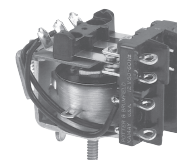
- Brand = Potter & Brumfield
- Accessories/Socket Type = DIN-rail Socket, Track mount Socket

## KRPA Series Panel Plug-in Relay

- 5 to 10A current capability
- Contact arrangements of 1, 2 and 3 form C (CO)
- Octal type termination for quick installation
- Indicator lamp available on certain models

### Typical applications

Baggage handling, lighting, inspection equipment, marine.



### Approvals

UL E22575; CSA LR15734

Technical data of approved types on request.

### Contact Data

Contact arrangement	1 form C (CO), 2 form C (CO), 3 form C (CO)	
Rated voltage	240VAC	
Rated current	10A	
Contact material	Ag	AgCdO
Min. recommended contact load	100mA, 12VDC	300mA, 12VDC
Frequency of operation	360 ops./hour	360 ops./hour

### Contact ratings

Type	Load	Cycles
<b>UL 508</b> KRPA, Ag	5A, 120VAC	100x10 <sup>3</sup>
	3A, 240VAC	100x10 <sup>3</sup>
	1/10HP, 120VAC	1x10 <sup>3</sup>
	1/6HP, 240VAC	1x10 <sup>3</sup>
KRPA, AgCdO	10A, 240VAC	100x10 <sup>3</sup>
	1/3HP, 120VAC	1x10 <sup>3</sup>
	1/2HP, 240VAC	1x10 <sup>3</sup>
KA, Ag	5A, 120VAC	
	3A, 240VAC	
	1/10HP, 120VAC	
	1/6HP, 240VAC	
KA, AgCdO	10A, 120VAC	
	6A, 240VAC	
	1/6HP, 120VAC	
	1/3HP, 240VAC	
Mechanical endurance	10x10 <sup>6</sup> ops.	

### Coil Data

Coil voltage range	6 to 220VDC
	6 to 240VAC

Coil insulation system according UL	Class B
-------------------------------------	---------

### Coil versions, DC coil

Coil code	Rated voltage VDC	Operate voltage VDC	Coil resistance $\Omega \pm 10\%$	Rated coil power W
6	6	4.5	32	1.15
12	12	9.0	120	1.2
24	24	18.0	472	1.25
48	48	36.0	1800	1.3
110	110	82.5	10000	1.2
–	220	Use 110V relay with 10K $\Omega$ , 5W resistor in series		

All figures are given for coil without preenergization, at ambient temperature +23°C.

### Coil Data (continued)

Coil versions, AC coil				
Coil code	Rated voltage VAC	Operate voltage VAC	Coil resistance $\Omega \pm 15\%$	Rated coil power VA
6	6	5.1	6	2.01
12	12	10.2	24	2.02
24	24	20.4	85	2.02
20	120	102.0	2250	2.1
240	240	204.0	9110	2.1

All figures are given for coil without preenergization, at ambient temperature +23°C.

### Insulation Data

Initial dielectric strength		
between open contacts		1000V <sub>rms</sub>
between contact and coil		1000V <sub>rms</sub>
between adjacent contacts		1000V <sub>rms</sub>
Initial insulation resistance		
between insulated elements		KRPA: 1000M $\Omega$ KA: 100M $\Omega$

### Other Data

Material compliance: EU RoHS/ELV, China RoHS, REACH, Halogen content refer to the Product Compliance Support Center at [www.te.com/customer-support/rohssupportcenter](http://www.te.com/customer-support/rohssupportcenter)

Ambient temperature		
DC coil		KRPA: -45°C to 70°C KA: -45°C to 85°C
AC coil		KRPA: -45°C to 55°C KA: -45°C to 70°C
Category of environmental protection		
IEC 61810		RTI - dust protected KRPA and RTO - open style KA
Terminal type		KRPA: 8- or 11-pin octal-type plug KA: solder terminals
Weight		85g
Packaging/unit		tray/25 pcs., box/150pcs.

### Accessories

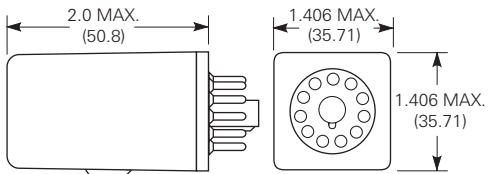
For details see datasheet      Sockets and Accessories, KRPA Relays

Product Code	Description
27E891	Two pole DIN socket (use 20C318 clip)
27E892	Three pole DIN socket (use 20C318 clip)
27E122	Two pole track mount socket (use 20C318 clip)
27E123	Three pole track mount socket (use 20C318 clip)

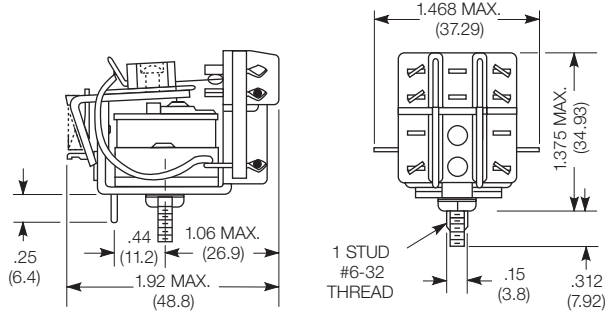
**KRPA Series Panel Plug-in Relay** (Continued)

**Dimensions**

KRPA

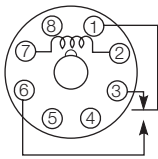


KA

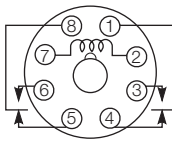


**Terminal assignment**

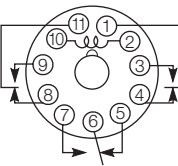
KRPA  
1 form C



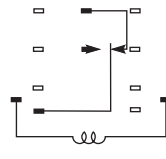
KRPA  
2 form C



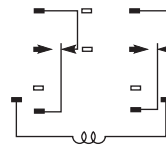
KRPA  
3 form C



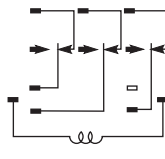
KA  
1 form C



KA  
2 form C



KA  
3 form C



**Product code structure**

Typical product code **KRPA -5 A Y -120**

**Type**

**KRPA** Enclosed relay with octal-style plug  
**KA** Open style relay with solder terminals

**Contact arrangement and rating**

**5** 1 form C (CO) **11** 2 form C (CO)  
**14** 3 form C (CO)

**Coil Input**

**A** AC, 50/60Hz **D** DC

**Contact material and indicator lamp option**

**Y** Ag, no indicator lamp **G** AgCdO, no indicator lamp  
**N** AgCdO, with indicator (Code N only available with relay type KRPA)

**Options**

**Leave blank** no additional options  
**F** Au flashed contacts **P** Push to test button  
(Options F and P only available with relay type KRPA)

**Coil voltage**

Coil code: please refer to coil versions table

**KRPA Series Panel Plug-in Relay** (Continued)

Product Code	Arrangement	Contact Material	Coil	Option	Part Number
KA-5AG-120	1 form C, 1 CO	AgCdO	120VAC	Open style	7-1393099-1
KA-5AY-120		Ag			7-1393099-3
KA-5DG-6		AgCdO	6VDC		7-1393099-9
KA-5DG-12			12VDC		7-1393099-7
KA-5DG-110			110VDC		7-1393099-6
KA-11AG-120	2 form C, 2 CO		120VAC		3-1393099-6
KA-11AY-6		Ag	6VAC		4-1393099-1
KA-11AY-24			24VAC		4-1393099-0
KA-11AY-120			120VAC		3-1393099-9
KA-11DG-12		AgCdO	12VDC		4-1393099-3
KA-11DG-24		24VDC		4-1393099-5	
KA-11DG-110		110VDC		4-1393099-2	
KA-14AG-120	3 form C, 3 CO		120VAC		5-1393099-0
KA-14AY-120		Ag			5-1393099-4
KA-14DG-24		AgCdO	24VDC		5-1393099-7
KA-14DG-110			110VDC		5-1393099-5
KRPA-5AG-24		1 form C, 1 CO		24VAC	None
KRPA-5AG-120			120VAC	9-1393104-8	
KRPA-5DG-6			6VDC	1393105-5	
KRPA-5DG-12			12VDC	1393105-3	
KRPA-5DG-24			24VDC	1393105-4	
KRPA-5DY-12		Ag	12VDC		1393105-6
KRPA-5DY-24			24VDC		1393105-7
KRPA-11AG-6	2 form C, 2 CO		AgCdO	6VAC	
KRPA-11AG-12			12VAC		2-1393104-4
KRPA-11AG-24			24VAC		1-1393105-2
KRPA-11AG-120			120VAC		2-1393104-5
KRPA-11AG-240			240VAC		2-1393104-7
KRPA-11AN-12			12VAC	Indicator	3-1393104-1
KRPA-11AN-24			24VAC		3-1393104-3
KRPA-11AN-120			120VAC		3-1393104-2
KRPA-11AN-240			240VAC		3-1393104-4
KRPA-11AY-6		Ag	6VAC	None	3-1393104-9
KRPA-11AY-12			12VAC		3-1393104-5
KRPA-11AY-24			24VAC		3-1393104-7
KRPA-11AY-120			120VAC		3-1393104-6
KRPA-11AY-240			240VAC		3-1393104-8
KRPA-11DG-6		AgCdO	6VDC		4-1393104-7
KRPA-11DG-12			12VDC		4-1393104-3
KRPA-11DG-24			24VDC		4-1393104-5
KRPA-11DG-48			48VDC		4-1393104-6
KRPA-11DG-110			110VDC		4-1393104-2
KRPA-11DG-125			125VDC		4-1393104-4
KRPA-11DG-24			24VDC		4-1393104-5
KRPA-11DG-48			48VDC		4-1393104-6
KRPA-11DN-12			12VDC	Indicator	5-1393104-0
KRPA-11DN-24			24VDC		5-1393104-1
KRPA-11DN-110			110VDC		4-1393104-9
KRPA-11DY-12		Ag	12VDC	None	5-1393104-6
KRPA-11DY-24			24VDC		5-1393104-7
KRPA-14AG-12	3 form C, 3 CO	AgCdO	12VAC		6-1393104-4
KRPA-14AG-24			24VAC		6-1393104-7
KRPA-14AG-120			120VAC		6-1393104-5
KRPA-14AG-240			240VAC		6-1393104-8
KRPA-14AN-24				24VAC	Indicator
KRPA-14AN-120			120VAC	7-1393104-3	
KRPA-14AN-240			240VAC	7-1393104-5	
KRPA-14AY-24		Ag	24VAC	None	7-1393104-8
KRPA-14AY-120			120VAC		7-1393104-7
KRPA-14AY-240			240VAC		7-1393104-9
KRPA-14DG-12		AgCdO	12VDC		8-1393104-2
KRPA-14DG-24			24VDC		8-1393104-4
KRPA-14DG-48			48VDC		8-1393104-5
KRPA-14DG-110			110VDC		8-1393104-1
KRPA-14DG-125			125VDC		8-1393104-3
KRPA-14DN-24			24VDC	Indicator	9-1393104-0
KRPA-14DY-24		Ag			None