

Wall mounted socket DUO
Part no. 7306

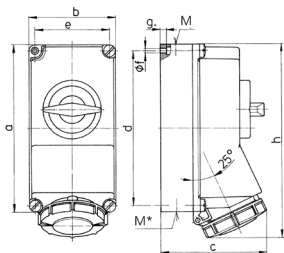


- screw terminals
- switched
- mechanical DUO-interlock
- highly heat resistant contact carrier
- nickel plated contacts
- 6 pole switch with 2 auxiliary contacts (1 NO and 1 NC)
- sockets can be padlocked

Technical specifications

Ampere	16 A
Poles	7 p
Voltage	400 V
Clock position	6 h
Hertz	50-60 Hz
Connection technology	Screw terminals
Contact	highly heat resistant contact carrier, nickel plated contacts
Protection type	IP67
Enclosure material	Plastic
Weight	1369 g
Certifications	CQC

Drawing



Drawing	Amp.	16	32
1 MB 382	Poles	7	7
Dim. in mm	a	225	225
	b	118	118
	c	147	153
	d	208	208
	e	101	101
	f	6.3	6.3
	g	8	8
	h	259	274
	M	1x25 and 1x32	1x25 and 1x32
	M*	2x25	2x25
Max. cable diam. (mm)		25	25
Terminal for cond. cross		1.5	2.5
section (mm²) min.-max.		—4	—10